



 KNIGHT[®]
2010

"The journey brings us closer together."



MONACO[®]

DRIVING YOUR DREAM.





415KQ | NEWPORT CHERRY | FRESCO



MONACO®

DRIVING YOUR DREAM.

There's just something about traveling together that makes every moment more enjoyable. Awakening to the sound of birds chirping outside. Poring over a roadmap, trying to decide where to go next. Stopping at a roadside diner to sample the local cuisine. It's all part of the RV experience. And the 2010 Knight is here to bring it to you. Safely. Comfortably. Hand in hand. So come on, you two. Embark on the journey of a lifetime. And don't be surprised if you find each other along the way.

THE JOURNEY'S END.

You've come a long way since your first RV, and now you've reached your destination. The 2010 Knight. With luxurious furnishings and a fully equipped galley, this is one beautiful way to travel. This year, the Knight pampers you with a new, more powerful AC system. Adjustable Ultraleather™ captain's chairs. A big 37-inch flatscreen LCD TV (on most models). And a generous new Standard Run Savings Package that includes a central vac, keyless entry, a three-camera rear vision system, and more. Oh yes, you've arrived.





SWEET DREAMS.

When you're ready to call it a night, the Knight is ready to work. In the bathroom, you'll find gorgeous ceramic tile flooring, a solid surface lavatory with integrated bowl and backsplash, satin nickel hardware, and a roomy one-piece shower. There's even a bath-and-a-half layout available with the 41DFT. The well-appointed bedroom features a full-size queen bed (comfort air mattress is optional), his and her nightstands, plenty of closet and storage space, and an impressive 26-inch LCD television with remote. Sweet.

NEWPORT CHERRY II



NOW FOR THE HARD PART.

Choosing the Knight was easy. Now, it's time to make it your own. For 2010, our designers are pleased to present an array of standard and optional décors to go with our always-popular Newport Cherry hardwood cabinetry. But don't worry. Even if you end up flipping a coin, you always win with Monaco.

FRESCO



ISLAND STYLE III

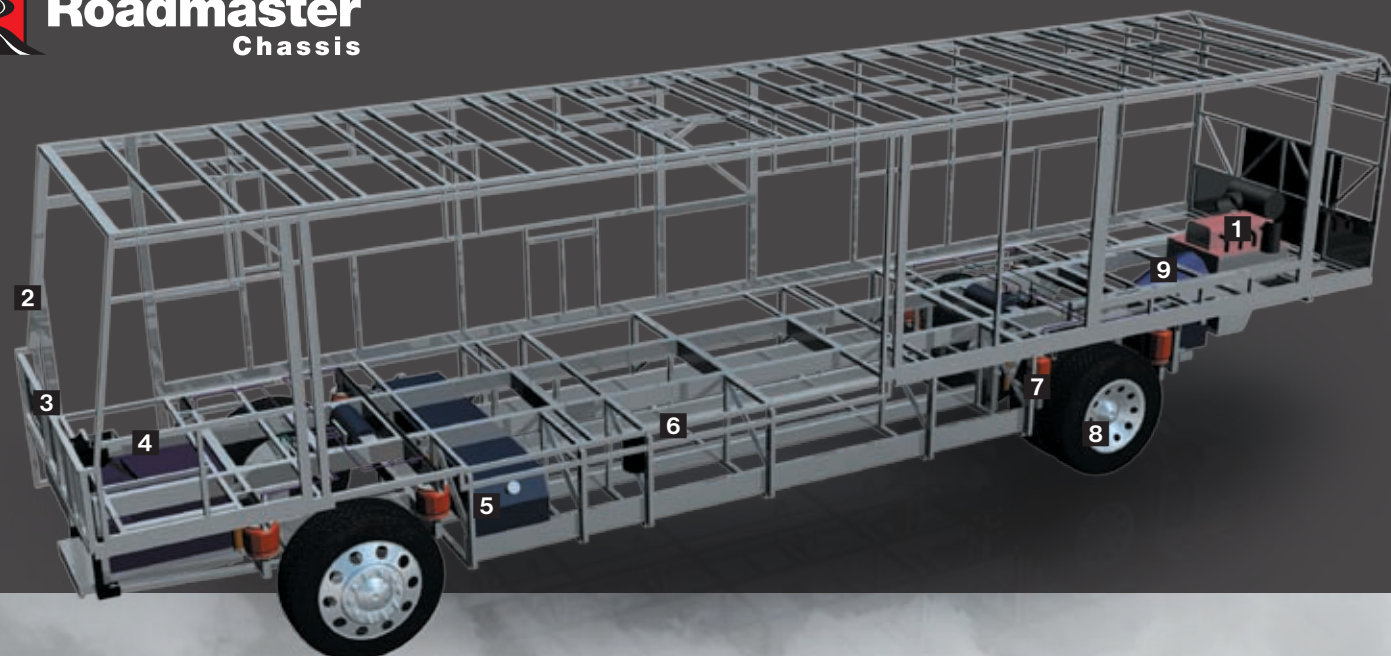


TROPICAL PARADISE



Carpet	A			
Dinette	B			
Sofa	C			
Bedspread	D	A	B	C

Note: Colors depicted are a reasonable representation though they may not be an exact match of the actual colors due to variances in processing and production. See your dealer for actual fabric and paint chip samples.



THE DIFFERENCE IS IN THE DETAILS.

Take the wheel of a luxury motorhome, and you're taking the wheel of the chassis it rides on. That's why the Knight rides exclusively on a Roadmaster chassis that is custom built to deliver the very best diesel motorhome experience. Roadmaster's construction utilizes advanced design and engineering to distribute stress evenly throughout the entire chassis, reducing the possibility of twisting and increasing durability and reliability. The Cushion Air Glide suspension system features eight outboard-mounted air bags and eight shock absorbers, and the system is supported by the largest ping tanks in the industry. It's the ultimate foundation for a luxury ride.

ROADMASTER RR8R RAISED RAIL CHASSIS

1 The Knight features a gutsy standard Cummins® ISC 360 diesel engine with 1,050 lbs./ft. of torque.

2 A steel cage cockpit gives the Roadmaster chassis incomparable strength and safety in the front of the coach.

3 Every Roadmaster chassis features a steel firewall for added protection in the cockpit.

4 The main rails feature an exclusive raised rail design which provides for larger full pass-through storage bays with flush floors. Other highlights include a 3/8" thick frame rail — compared to the 1/4" of other manufacturers — and a stacked aluminum intercooler and radiator for optimum heat transfer and cooling.

5 Dual fuel fill allows you to fill the tank from either side of the coach, for greater convenience and flexibility at the pump.

6 This steel truss system is engineered as part of the chassis and provides outstanding strength and rigidity plus pass-through storage. In addition, the structure is pre-primed and coated with a rust-inhibiting paint.

7 Eight air bags work in conjunction with eight gas-charged shock absorbers to prevent road trauma from ever reaching the coach. Ride height sensors continually adjust the air pressure at each axle to maintain a level ride and eliminate nosediving, weight transfer, and floating on curved roads. This system also stabilizes the coach on uneven surfaces.

8 Automatic Traction Control (ATC) eliminates wheel slippage in slick conditions and heightens control. The Anti-Lock Braking System (ABS) gives you superior stopping power, especially on steep grades. Together, these sophisticated systems offer the very best safety on the road.

9 Allison® 3000 MH 6-Speed World Transmission and electronic shifter. The three-point engine mounting system lowers the coach's center of gravity and reduces the amount of vibration that reaches the coach. The mounting also makes the engine easier to service. A 10,000 lb. tow hitch rating is the highest in its class.

OUTBOARD AIR BAG SUSPENSION

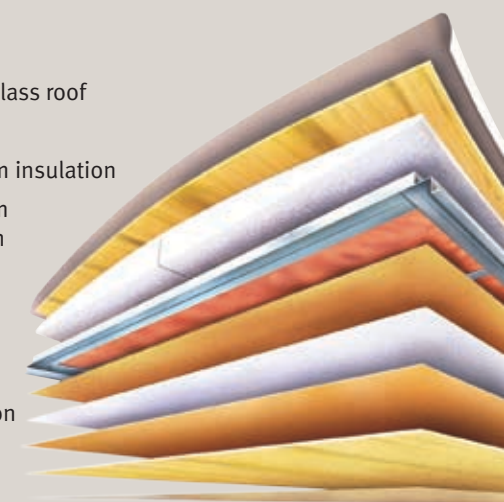
The outboard-mounted air bags are protected by two steel plates and are placed farther apart than the competition, providing a wider and more stable platform for the coach. The active suspension automatically adjusts the pressure of the air bags as you drive and virtually eliminates nosediving and the side-to-side body sway associated with high wind conditions, curvy roads and emergency maneuvers.



ROOF CONSTRUCTION

(top to bottom)

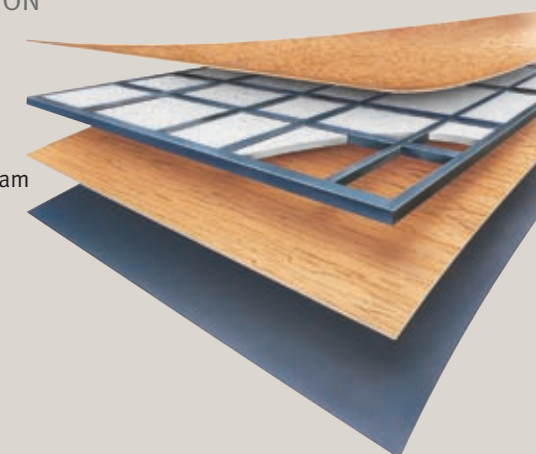
- One-piece peaked fiberglass roof
- Luaun backing
- Thick, tapered bead foam insulation
- Aluminum double I-beam superstructure filled with fiberglass insulation
- Vapor barrier
- Structure foam: thermal insulative barrier
- 1/2" bead foam insulation
- Foam padding for extra insulation
- Padded vinyl ceiling



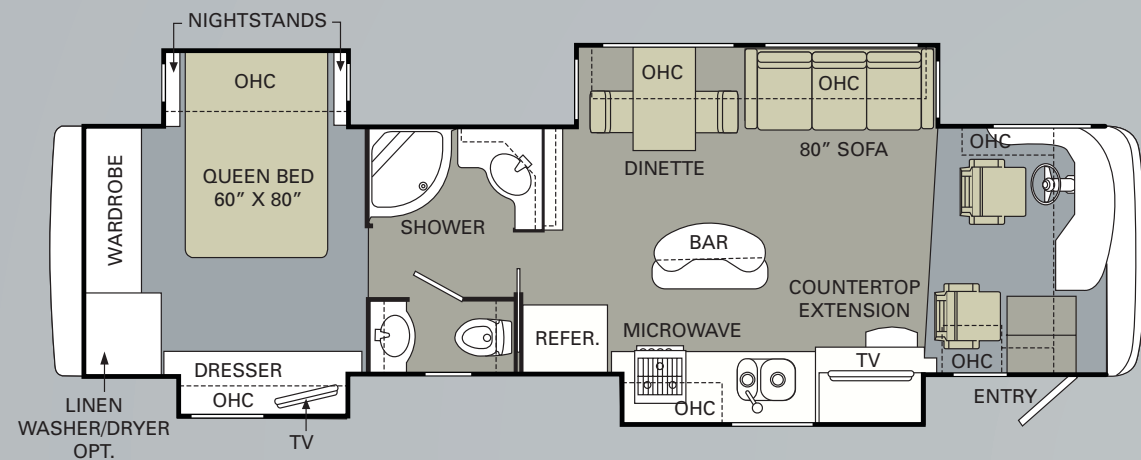
FLOOR CONSTRUCTION

(top to bottom)

- Structurwood™
- 1-1/2" tube
- High-performance thermal insulation foam
- Luaun
- 3-ply backer



Cummins® ISC 360
For 2010, Knight boasts a powerful standard Cummins® ISC diesel engine with 1,050 lbs./ft. of torque at 1,400 RPM.

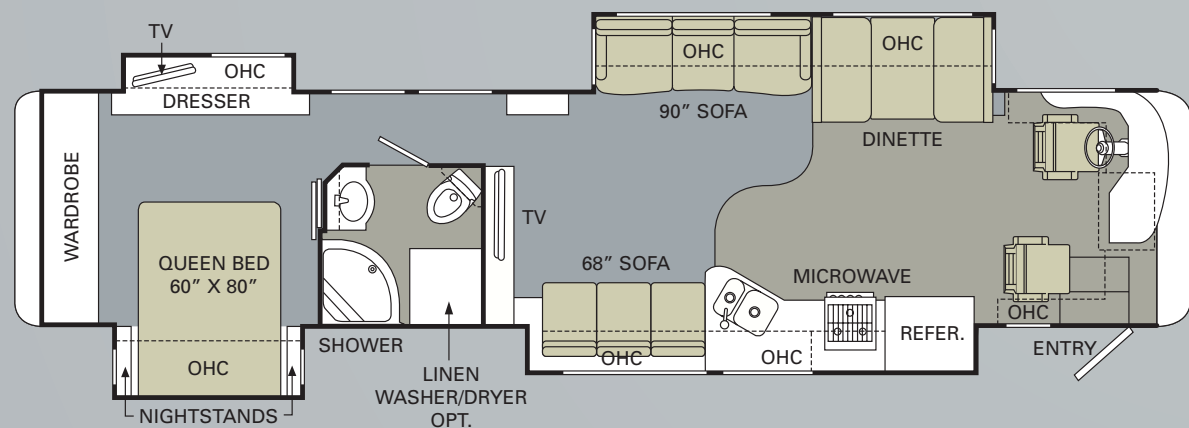


38PKQ

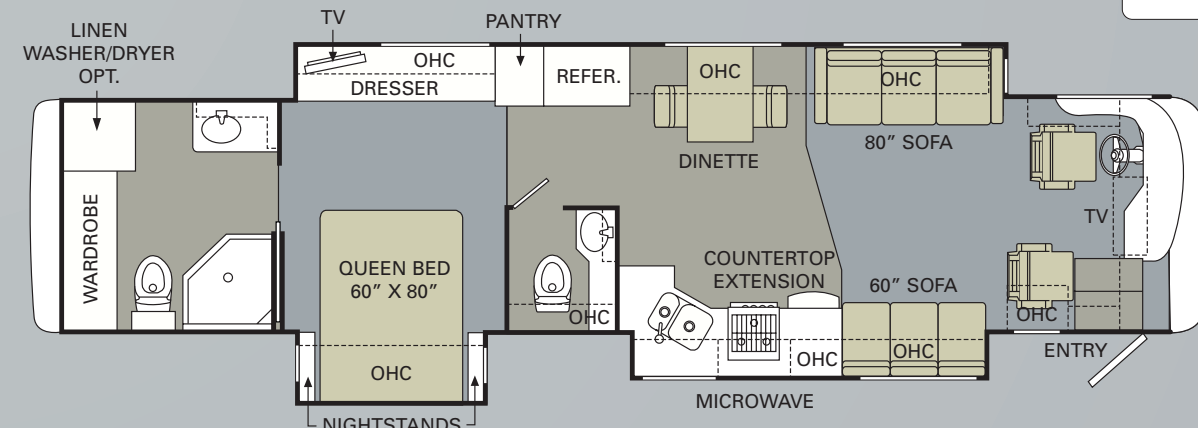
THE VIEW FROM ABOVE.

The 2010 Knight offers something for everyone, with overall lengths of 38 and 41 feet. The 38PKQ and 41SKQ have quad slide-outs for spacious luxury, while the 41DFT features the incomparable space and convenience of a full-wall slide-out and a bath-and-a-half layout with a full bath at the back for added privacy.

 TILE  CARPET



41SKQ



FULL-WALL SLIDE
PANA suite

41DFT

BUY LOCALLY. ENJOY EVERYWHERE.

Monaco RV strongly encourages our retail customers to purchase from their local dealerships whenever possible. Buying a new Monaco RV locally allows a customer to establish a relationship with a dealer close to home and provides convenient service and support from product-trained technicians. On our end, Monaco RV will continue to provide our dealer partners and customers with the finest recreational vehicles in the industry.

ALL ROADS LEAD TO WWW.MONACOCOACH.COM.

Wherever the road takes you, you're never more than a click away from your friends at Monaco. Just go to www.monacocoach.com for all the latest product news, club dates and destinations, a dealer locator function, and factory tour information. You can also e-mail us directly through the site at any time.



Due to continuous product improvements, visit www.monacocoach.com for the latest in standards and options, specifications, and technical data.

Model	Weight Ratings (Lbs.)																
	Gross Vehicle	Gross Combined ¹	Front Gross Axle	Rear Gross Axle	Measurements	Wheelbase	Overall Length	Overall Height (with AC) (add 5" for satellite option)	Interior Height	Interior Width	Exterior Width	Tank Capacity (Gal.) ²	Water Heater	Gray Tank	Black Tank	Fresh Tank	LP Tank ³
38PKQ	33,000	43,000	13,000	20,000		237"	39' 7"	12' 7"	84"	94.5"	100.5"	10	62	40	100	39	100
41SKQ	33,000	43,000	13,000	20,000		273"	42' 7"	12' 7"	84"	94.5"	100.5"	10	62	40	100	39	100
41DFT	33,000	43,000	13,000	20,000		273"	42' 7"	12' 7"	84"	94.5"	100.5"	10	62	40	100	39	100

¹Towing capacity is limited by GCWR; your vehicle's towing capacity is the difference between the GCWR and the actual vehicle weight, including all water, fuel, passengers and cargo. Your towed vehicle should be equipped with auxiliary brakes if the weight of the towed vehicle exceeds 1,000 lbs. Consult your owner's manual for further towing information.

²All tank capacities are estimated based upon calculations provided by the tank manufacturers and represent approximate capacities. The actual "usable capacity" may be greater or less than the estimated capacities based upon fabrication and installation of the tanks.

³Actual filled LP capacity is 80% of listing due to safety shut-off required on tank.

The actual overall length of the recreational vehicle may differ from that indicated in the brochure due to variances in the manufacturing process and/or installed components. The actual length may be greater or less than that indicated. Due to the large variety of options and floorplan arrangements available to our customers, actual weights for each unit can differ significantly. Monaco provides a weight sticker on each unit we produce which includes that unit's tank capacities and approximate weight. Consult your local Monaco dealer for unit availability and further information. The information printed in this brochure reflects product design, fabrication, and component parts at the date of printing. The manufacturer reserves the right, at any time, to make changes in product design or material or component specifications

as its sole option, without notice. This includes the substitution of components of a different brand or trade name which will result in comparable performance. All information printed in this brochure is subject to change after the date of printing. Some features shown or mentioned in this brochure are optional and may only be available in selected floorplans. Photographs may depict a floorplan option that has been discontinued or is no longer available at the time of your purchase. Photographs may show props or decorations that are not standard equipment. Monaco, the Monaco logo and its design, are registered trademarks. Other products and company names are trademarks and/or registered trademarks of their respective holders. While the color of the motorhome's exterior and the interior fabrics depicted in this sales brochure are fair and

reasonable depictions, the colors depicted may not be an exact match of the actual colors because of the variances in photo-processing and printing. Due to product improvements, changes during the model year and/or transcription errors that may occur, information represented within this brochure may not be accurate at the time of your purchase. If certain information is significant to your purchasing decision, please confirm the information with your dealer. Component part and appliance manufacturers issue limited warranties covering portions of the recreational vehicle not covered under the Limited Warranties issued by Monaco RV, LLC. To learn specific details regarding warranty coverage, please contact your selling dealership or review the warranty packet inside the recreational vehicle.

BODY CONSTRUCTION

- › Steel Cage Cockpit Construction
- › Laminated Sidewall Construction
- › Peaked One-Piece Fiberglass Roof with Fiberglass Insulation
- › Panaview™ 1-Piece Front Windshield
- › Front and Rear Molded Fiberglass Cap
- › One-Piece Generator Access Door
- › Electric Flush-Floor Stepwell Cover
- › Dual Head Power Controlled Heated Exterior Mirrors with Turn Indicator Lights
- › Side-Hinged Baggage Doors

- › Interior Rubber Stepwell Storage Bucket
- › One-Piece Polyethylene Pass-Through Storage Compartment
- › Wheel Mud Flaps
- › Full-Length Mud Flap
- › 3M Film Front Mask
- › Deluxe Full-Body Paint
- › Roof Ladder
- › Undercoating

OPTIONS

- › Full Pass-Through Storage Bay Slide-Out Tray (Complete Pass-Through)
- › Standard Run Package: 3-Camera Vision System, Full Pass-Through Storage Bay Slide-Out Tray, Central Vac, Exterior Tank Monitor Gauges, RV Sani-Con, Power Water Hose Reel, Keyless Entry

CHASSIS/ENGINE/SUSPENSION

- › Roadmaster Raised Rail Chassis RR8R
- › Cummins® ISC 360 Engine with Allison® 3000 MH 6-Speed World Transmission and Electronic Shifter
- › Engine Displacement: 8.3L/506 Cu. In.
- › Torque: 1,050 lbs./ft. Max. Net at 1,400 RPM
- › Aluminum Rear-Mounted Radiator with CAC Cooler
- › Dual Fuel Fill
- › 160 Amp Alternator
- › Rear Axle Ratio: 4:30-1
- › Radial Tires: 275/70R/22.5
- › Polished Aluminum Wheels
- › Cushion Air-Glide Suspension with Eight Outboard-Mounted Air Bags and Eight Shock Absorbers
- › Anti-Lock Braking System with Full Air Brake
- › Automatic Traction Control
- › Variable Geometry Turbo Exhaust Brake
- › Auto Slack Adjusters
- › Prewire for Supplemental Braking System
- › Engine Block Heater
- › Automatic Hydraulic Leveling System
- › 10,000 Lb. Hitch Receiver with Dual Connector 4-Pin or 7-Pin

COCKPIT

- › Automotive Dash with Silver Graphite Metallic Instrumentation Panel
- › In-Dash AM/FM/CD Stereo Radio with Sirius-Ready Compatibility, iPod Control, Aux-in-Conn, SD Card Slot and Weather Band
- › Rear Vision System with LCD Screen
- › Adjustable Brake and Accelerator Pedals
- › Intermittent Windshield Wipers
- › 4-Spoke Steering Wheel with Horn Pad and Logo
- › Air Horns
- › Ultraleather™ Six-Way Power Pilot Seat
- › Ultraleather™ Six-Way Power Co-Pilot Seat with Powered Footrest

OPTIONS

- › Sirius Radio Satellite Tuner with Antenna
- › 3-Camera Rear Vision System with LCD Screen
- › GPS System
- › In-Dash Driver's Message Center
- › Power Windshield and Manual Driver/Passenger Solar Screens with Blackout Shades (Required)

APPLIANCES AND ACCESSORIES

- › Norcold® 12 Cu. Ft. 2-Way 4-Door Refrigerator with Ice Maker
- › High-Output 3-Sealed Burner Cooktop without Oven
- › Spacesaver Convection Microwave with Touch Control
- › 32" Flatscreen LCD TV in Front Cockpit Overhead (41DFT)
- › 37" Flatscreen LCD TV in Living Area Hutch (Replaces Front Cockpit TV) (41SKQ)
- › 37" Flatscreen LCD TV in Center of Coach Facing Living Area (Replaces Front Cockpit TV) (38PKQ)
- › 26" LCD Color TV with Remote Control in Bedroom
- › Home Theater System
- › Curbside: Exterior Patio Hookups for Cable, 110 V Outlet and Hatch Door to Exterior
- › CB Prep
- › Digital Satellite System Prep
- › Interior Cable TV Hookup and Telephone Jacks
- › Exterior Gas Line Hookup for LP Accessories
- › Washer/Dryer Prep

OPTIONS

- › High-Output 3-Sealed-Burner Range with Oven
- › Combination Washer/Dryer
- › Stackable Washer/Dryer (41SKQ Only)
- › Dometic Sidewise 14 Cu. Ft. 2-Way Refrigerator with Ice Dispenser in the Door (41SKQ Only)
- › Residential Stainless Steel Refrigerator (41SKQ Only)
- › Stainless Steel Package (Includes Stainless Steel Refrigerator and Microwave)
- › Stainless Steel Microwave (41SKQ Only)
- › Bedroom DVD Player
- › Central Vacuum
- › R5 KVH In-Motion Satellite (Does Not Include Receivers)
- › Fireplace (41SKQ Only)
- › Multi-Satellite HD KU/KA Dish (DIRECTV® Wineguard® Stationary Operation Only) (Does Not Include Receivers)
- › Exterior Entertainment Center (32" LCD/AM/FM/CD Radio with Two Speakers) (41DFT Only)
- › High-Definition Cinema Package (Sound Bar with DVD, Wireless Subwoofer and Blu-Ray Player) (N/A 41DFT)

INTERIOR

- › Raised Panel Hardwood Cabinet Doors in Newport Cherry II
- › Refrigerator Raised Panel Hardwood Inserts
- › Heavy-Duty Ball-Bearing Drawer Guides
- › Satin Nickel Finish Cabinetry Hardware and Bath Accessories
- › Polished Radius Solid Surface Kitchen Countertop with Stainless Steel Sink with Two Sink Covers
- › Solid Surface Radius Profile Bath Lavatory Countertop with Integrated Bowl
- › All Other Countertops Laminated, with Solid Surface Edge
- › Solid Surface Kitchen Galley and Bathroom Lavatory Backsplash with Decorative Glass Insert
- › Ceramic Tile in Kitchen and Bath
- › Tile Entry Floor
- › Full Tile in Living Room (38PKQ Only)
- › Textured Style Nylon Carpeting with Pad in Living Area and Bedroom (N/A 38PKQ)
- › Textured Style Nylon Carpeting with Pad in Bedroom (38PKQ Only)
- › Hardwood Slide-Out Fascia with Decorative Corner Blocks and Center Block
- › Hall Cabinet (41SKQ Only)
- › Hardwood Raised Panel Bathroom Door
- › Oversized Rear Wardrobe Closet with Deluxe Mirror Door Frames Satin Nickel, with Decorative Hardwood Header
- › Bedroom Wardrobe Slide-Out Foot of Bed
- › Decorative Window Valances
- › Day/Night Pleated Blackout Shades in Living Area and Bedroom, EZ Lift Mini Blinds in Kitchen and Private Bath

- › Soil Repellent Protection on Fabric
- › Center Island w/ Corian® Top (38PKQ Only)
- › Pullout Countertop Extension with Drawers and Corian® Top (N/A 41SKQ)

OPTIONS

- › Decors: Island Style III, Fresco, and Tropical Paradise
- › Full Tile in Living Room (41SKQ and 41DFT)
- › Newport Cherry Wood

FURNITURE

- › Queen Bed with Overhead Cabinet and Nightstands
- › Arched Back Wood Booth Dinette with Side-Sliding Dinette Tabletop (41SKQ Only)
- › Freestanding Dinette with Full-Length Wall Cabinet and Two Freestanding Chairs (41DFT Only)
- › Wood Pedestal Dinette Table with Extension and Two Freestanding Chairs (38PKQ Only)
- › Roadside: Fabric Jackknife Sofa
- › Curbside: Fabric Jackknife Sofa (N/A 38PKQ)

OPTIONS

- › Queen Bed Select Comfort Air Mattress
- › Roadside: Ultraleather™ Jackknife Sofa
- › Roadside: Fabric Hide-A-Bed Sofa with Air Mattress
- › Roadside: Ultraleather™ Hide-A-Bed with Air Mattress
- › Roadside: Wraparound Computer Desk with Ultraleather™ Euro-Recliner (41SKQ)
- › Roadside: Ultraleather™ Booth Dinette Ensemble (41SKQ Only)
- › Roadside: Ultraleather™ Sectional Hide-A-Bed Sofa with Air Mattress (38PKQ)
- › Roadside: (2) Leather Euro-Recliners with Table (41SKQ Only)
- › Curbside: Ultraleather™ Jackknife Sofa (N/A 38PKQ)
- › Curbside: Ultraleather™ Hide-A-Bed Sofa with Air Mattress (41SKQ Only)
- › Freestanding Dinette with Full-Length Wall Cabinet and Two Freestanding Chairs (41SKQ Only)

ELECTRICAL SYSTEMS AND LIGHTS

- › 50 Amp 120V Distribution Panel and Power Cord
- › Power Control System
- › 2,000 Watt Inverter
- › Onan® 8.0 kW QD Diesel Generator
- › Four 6V House Batteries
- › Two 12V Heavy-Duty Chassis Batteries
- › Battery Disconnect Switch at Front Door
- › Porch Light and Exterior Step Light on Same Switch
- › Exterior Power Entry Step with Light
- › Interior Stepwell Entry Step Lights
- › Lights in Outside Storage Compartments
- › 120V Receptacles in Outside Storage Compartment
- › Underhood Utility Light
- › Convenience Center in Hallway
- › Decorative Lighting

OPTIONS

- › Exterior Tank Monitor Gauge in Wet Bay

PLUMBING AND LP SYSTEMS

- › Single Lever Kitchen Faucet with Pullout Sprayer
- › Bath Lavatory Faucet
- › Central Water Filtration System
- › Demand Water System and Water Pump
- › Water Pump Switch at Kitchen Galley, Private Bath Wall and Service Bay Area
- › 10-Gallon LP Gas/Electric Water Heater with Electronic Ignition, DSI
- › Winterization Valving System
- › Water Heater Bypass Valving
- › China Toilet
- › China Toilet Electronic Silent Plus (41DFT Only)
- › Holding Tank Rinsing System
- › Insulated Systems Compartment with Easy Access to Hookup
- › Shower Inside Wet Bay with Hot/Cold Water
- › Gravity and Pressurized Water Fill
- › One-Piece Neo-Angled Shower with Obscured Glass Door (41DFT Only)
- › One-Piece Round Shower (N/A 41DFT)
- › Satin Nickel Shower Faucet with Slide Bar and Shut-Off Valve at Shower Head

OPTIONS

- › RV Sani-Con 1 System—Holding Tank Flush System (This Option Replaces Contained Storage Area for Sewer Hose)
- › Power Water Hose Reel
- › Neo-Angled Bathtub

HEATING, VENTS AND AIR CONDITIONING

- › Dual 15M BTU Roof Air Conditioner with Ducted Air, Heat Pumps and Digital Thermostat Control
- › Electronic Ignition Furnace (One 31M and One 20M BTU)
- › Electronic Dash AC/Heat Climate Control System
- › Kitchen Powered 12V Attic Fan with Wall Control of Automatic Dome and Fan Power
- › Bath Powered 12V Attic Fan with Wall Control of Automatic Dome and Fan Power
- › 12V Heater in Wet Bay

OPTIONS

- › Ceiling Fan in Bedroom

WINDOWS, DOORS AND AWNINGS

- › Radius Flush-Mounted Dual Pane Safety Glass Dark Tinted Slider Windows
- › Automatic Front Door Awning
- › Front Entry Door with Removable Screen and Anti-Skid Steps
- › Automatic Patio Awning
- › Topper Slide-Out Awnings Living Area and Bedroom
- › Window Awnings on All Slide-Out House Windows Except Kitchen Windows and Slide-Out Windows Under Patio Awning
- › Tinted Skylight in Bathroom with Protecta Glaze

OPTIONS

- › Keyless Entry (Key Fob Only)

SAFETY

- › Fire Extinguisher
- › Deadbolt Lock on Entrance Door
- › 120V GFI Protected Circuit Kitchen, Bath and Exterior
- › LP Gas Detector
- › Smoke Detector
- › Carbon Monoxide Detector
- › Driver and Passenger Three-Point Seatbelts (Wall Mounted)
- › Third Brake Safety Light
- › Egress Window (1 in Bedroom)



MONACO®

DRIVING YOUR DREAM.

At Monaco RV it's our goal for all our customers to enjoy their RV experience from the beginning. We have forged strong, reliable relationships with our dealer partners, and we encourage our customers to do the same. We're proud to boast a network of over 350 dealership partners and service centers across North America. We're confident that this relationship will only enhance your RV experience and provide the added peace of mind you desire, so you can focus on the important stuff. After all, we're not just selling a world-class product, we're selling "fun." You can rest assured, Monaco RV will be along for the ride, every mile your RV adventure takes you.

SIGNATURE SERIES



DYNASTY®



CAMELOT™



DIPLOMAT®



KNIGHT®



CAYMAN®



MONARCH®



RIPTIDE®



MONTCLAIR

